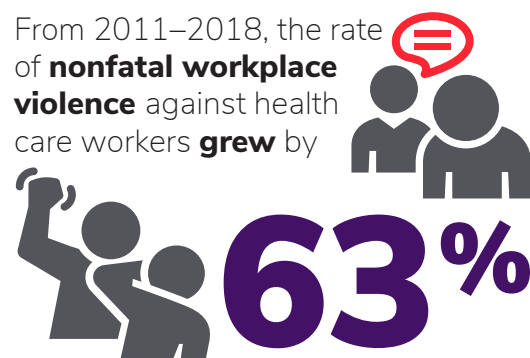
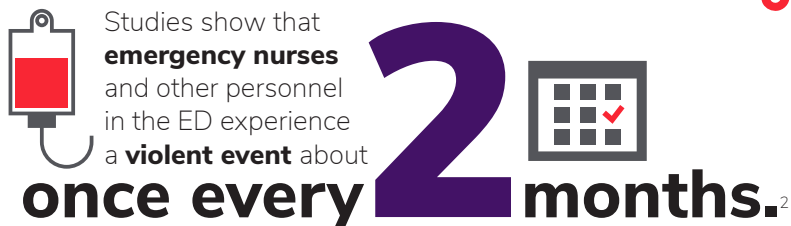
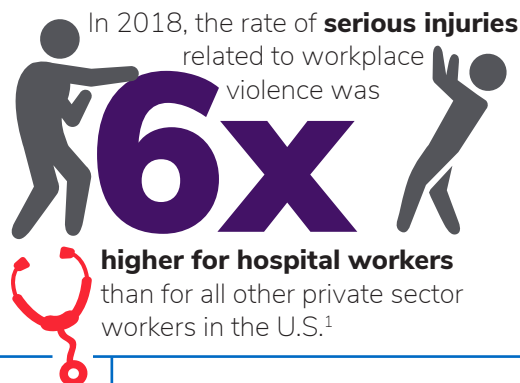
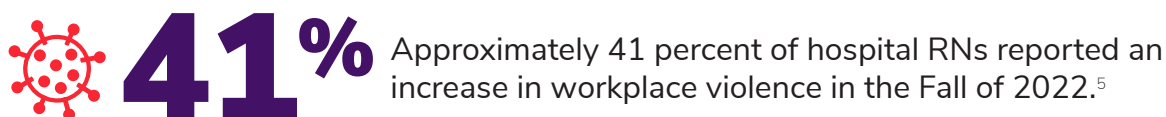


Prevalence of Workplace Violence in Health Care/Emergency Departments



ED workers are exposed to **significant rates** of **physical** and **verbal abuse**. Under-reporting of workplace violence in the ED is common and contributes to the difficulty in accurately tracking violence.^{3,4}



Impact of Workplace Violence on Nurses, Patients and U.S. Health Care System



1. U.S. Bureau of Labor Statistics. (n.d.). Fact sheet | workplace violence in healthcare, 2018 | April 2020. U.S. Bureau of Labor Statistics. Retrieved March 21, 2022, from <https://www.bls.gov/iif/oshwc/foi/workplace-violence-healthcare-2018.htm#>
 2. Kowalenko T et al. Prospective study of violence against ED workers. (2013). American Journal of Emergency Medicine - 31 (1), 197-205
 3. Taylor & Rew, A systematic review of the literature: workplace violence in the emergency department (2011). Journal of Clinical Nursing
 4. Gacki-Smith et al. Violence against nurses working in US emergency departments (2009). Journal of Nursing Administration
 5. National Nurses United Survey. NNU unionized nurses members and non-union nurses in the U.S. (Sept. 22-Nov. 28, 2022).
 6. Gacki-Smith et al. Violence against nurses working in US emergency departments (2009). Journal of Nursing Administration
 7. Gallant-Roman M. Strategies and Tools to reduce workplace violence (2008). AAOHN Journal